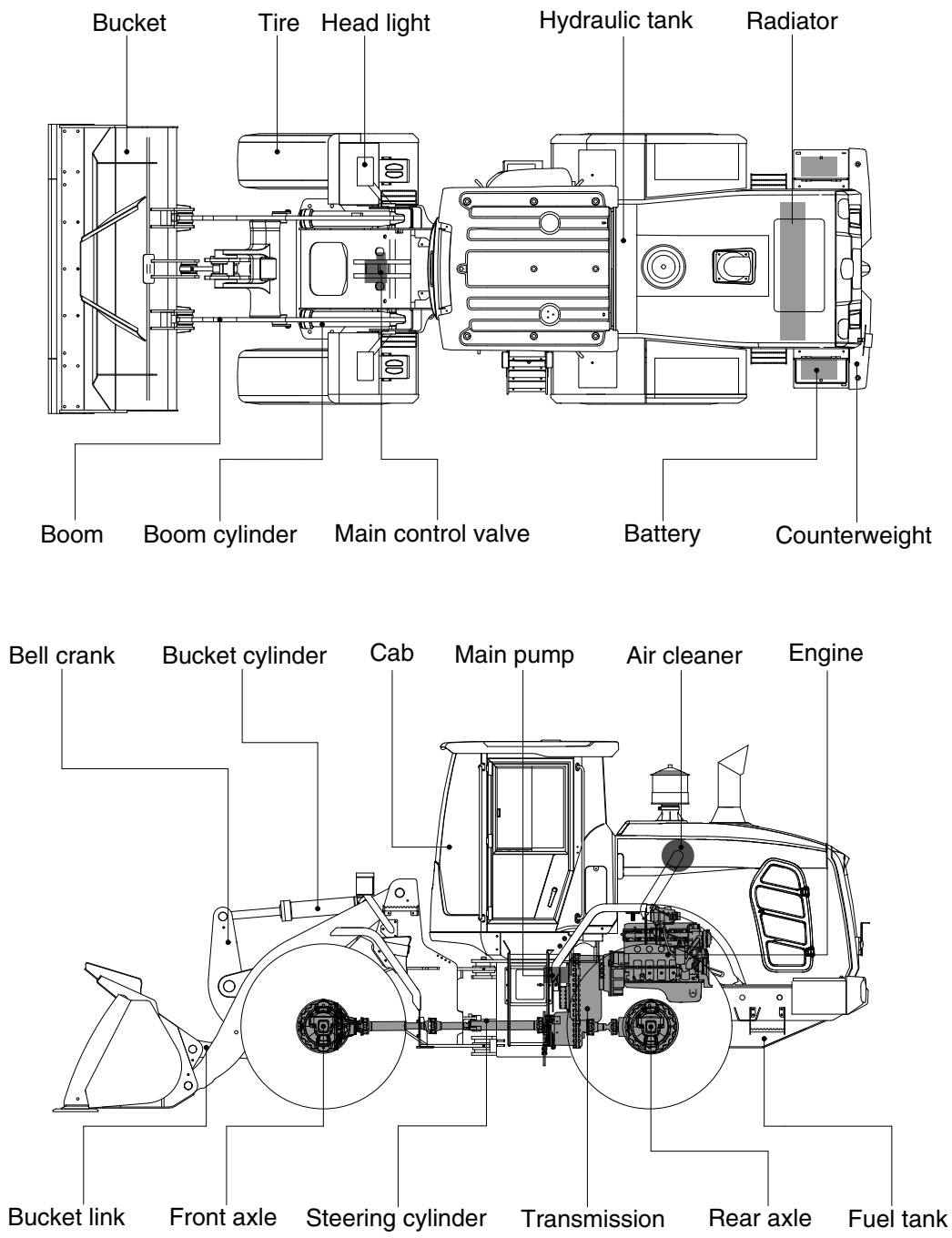


2. SPECIFICATIONS

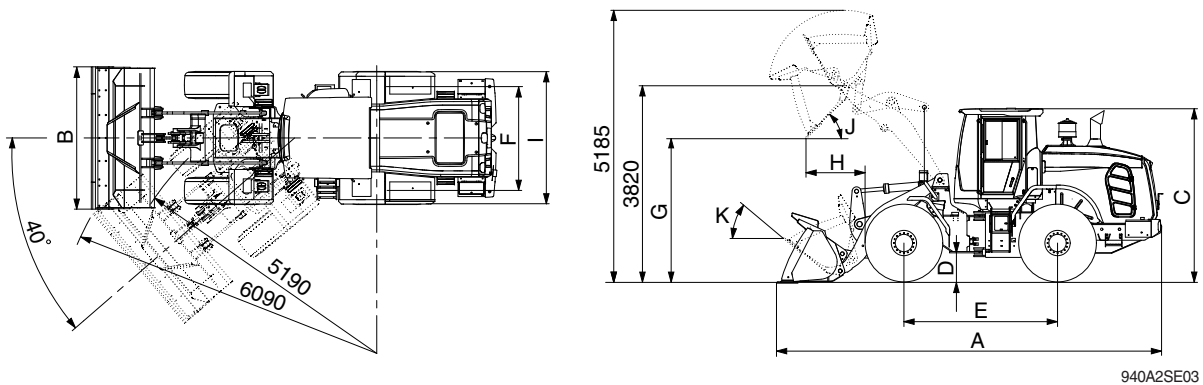
1. MAJOR COMPONENTS



940SA2SE01

2. SPECIFICATIONS

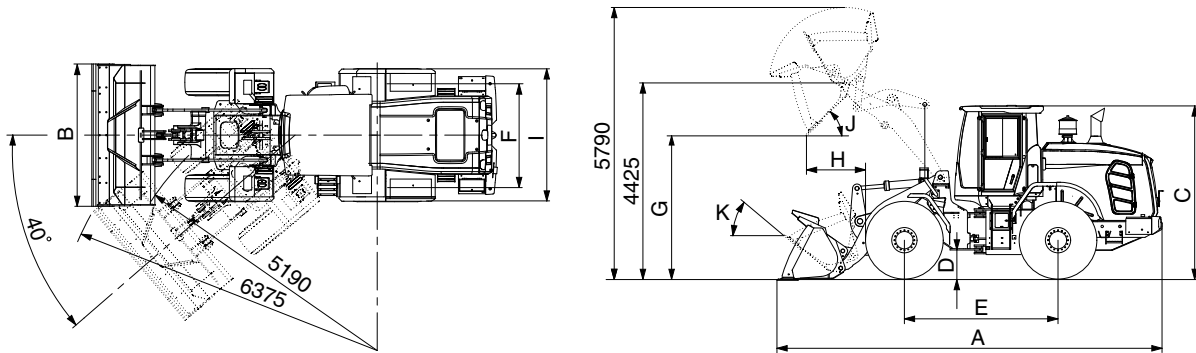
1) WITH BOLT-ON CUTTING EDGE TYPE BUCKET (HL940 T3)



940A2SE03

Description			Unit	Specification
Operating weight			kg (lb)	13200 (29105)
Bucket capacity	Struck		m³ (yd³)	2.0 (2.6)
	Heaped			2.3 (3.0)
Overall length	A		mm (ft-in)	7600 (24' 11")
Overall width	B			2600 (8' 6")
Overall height	C			3300 (10' 10")
Ground clearance	D			417 (1' 5")
Wheelbase	E			3000 (9' 10")
Tread	F			1930 (6' 4")
Dump clearance at 45°	G			2765 (9' 1")
Dump reach (full lift)	H			1095 (3' 7")
Width over tires	I			2450 (8' 0")
Dump angle	J			degree (°)
Rollback angle (carry position)	K		47	
Cycle time	Lift (with load)		sec	5.5
	Dump (with load)			1.8
	Lower (empty)			3.7
Maximum travel speed			km/hr (mph)	38.8 (24.1)
Braking distance			m (ft-in)	12.6 (41' 4")
Minimum turning radius (center of outside tire)				5.19 (17' 0")
Gradeability			degree (°)	30
Breakout force			kg (lb)	11800 (26015)
Travel speed	Forward	First gear	km/hr (mph)	6.7 (4.2)
		Second gear		12.1 (7.5)
		Third gear		23.5 (14.6)
		Fourth gear		38.8 (24.1)
	Reverse	First gear		7.0 (4.3)
		Second gear		12.8 (8.0)
		Third gear		24.7 (15.3)

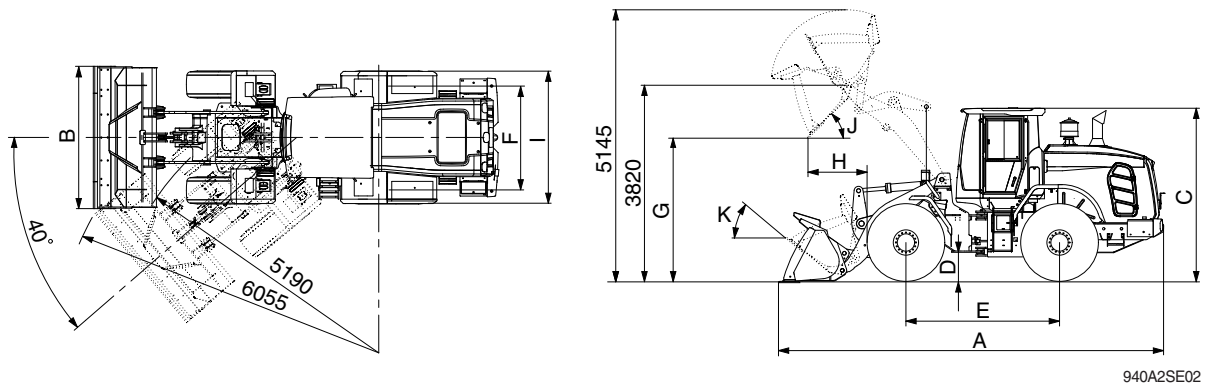
WITH BOLT-ON CUTTING EDGE TYPE BUCKET (HL940XT T3)



940A2SE03-2

Description			Unit	Specification
Operating weight			kg (lb)	13645 (30085)
Bucket capacity	Struck		m³ (yd³)	2.0 (2.6)
	Heaped			2.3 (3.0)
Overall length	A		mm (ft-in)	8190 (26' 10")
Overall width	B			2600 (8' 6")
Overall height	C			3300 (10' 10")
Ground clearance	D			417 (1' 4")
Wheelbase	E			3000 (9' 10")
Tread	F			1930 (6' 4")
Dump clearance at 45°	G			3370 (11' 1")
Dump reach (full lift)	H			1090 (3' 7")
Width over tires	I			2450 (8' 0")
Dump angle	J			degree (°)
Rollback angle (carry position)	K		50	
Cycle time	Lift (with load)		sec	5.5
	Dump (with load)			1.8
	Lower (empty)			3.7
Maximum travel speed			km/hr (mph)	40 (24.9)
Braking distance			m (ft-in)	12.6 (41' 4")
Minimum turning radius (center of outside tire)				5.19 (17' 0")
Gradeability			degree (°)	30
Breakout force			kg (lb)	11940 (26325)
Travel speed	Forward	First gear	km/hr (mph)	6.7 (4.2)
		Second gear		12.1 (7.5)
		Third gear		23.5 (14.6)
		Fourth gear		38.8 (24.1)
	Reverse	First gear		7.0 (4.3)
		Second gear		12.8 (8.0)
		Third gear		24.7 (15.3)

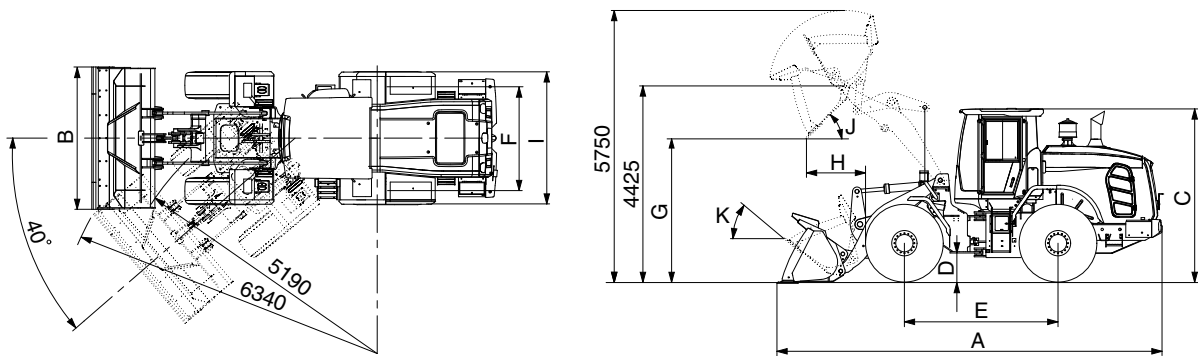
WITH BOLT-ON CUTTING EDGE TYPE NARROW BUCKET (HL940 T3)



940A2SE02

Description			Unit	Specification
Operating weight			kg (lb)	13160 (29015)
Bucket capacity	Struck		m³ (yd³)	1.8 (2.4)
	Heaped			2.1 (2.7)
Overall length	A		mm (ft-in)	7560 (24' 10")
Overall width	B			2550 (8' 4")
Overall height	C			3300 (10' 10")
Ground clearance	D			432 (1' 5")
Wheelbase	E			3000 (9' 10")
Tread	F			1930 (6' 4")
Dump clearance at 45°	G			2795 (9' 2")
Dump reach (full lift)	H			1065 (3' 6")
Width over tires	I			2450 (8' 0")
Dump angle	J			degree (°)
Rollback angle (carry position)	K		47	
Cycle time	Lift (with load)		sec	5.5
	Dump (with load)			1.8
	Lower (empty)			3.7
Maximum travel speed			km/hr (mph)	40 (24.9)
Braking distance			m (ft-in)	12.6 (41' 4")
Minimum turning radius (center of outside tire)				5.19 (17' 0")
Gradeability			degree (°)	30
Breakout force			kg (lb)	12230 (26960)
Travel speed	Forward	First gear	km/hr (mph)	6.7 (4.2)
		Second gear		12.1 (7.5)
		Third gear		23.5 (14.6)
		Fourth gear		38.8 (24.1)
	Reverse	First gear		7.0 (4.3)
		Second gear		12.8 (8.0)
		Third gear		24.7 (15.3)

WITH BOLT-ON CUTTING EDGE TYPE NARROW BUCKET (HL940XT T3)



940A2SE02-1

Description			Unit	Specification
Operating weight			kg (lb)	13605 (30000)
Bucket capacity	Struck		m³ (yd³)	1.8 (2.4)
	Heaped			2.1 (2.7)
Overall length	A		mm (ft-in)	8150 (26' 9")
Overall width	B			2550 (8' 4")
Overall height	C			3300 (10' 10")
Ground clearance	D			432 (1' 5")
Wheelbase	E			3000 (9' 10")
Tread	F			1930 (6' 4")
Dump clearance at 45°	G			3400 (11' 2")
Dump reach (full lift)	H			1060 (3' 6")
Width over tires	I			2450 (8' 0")
Dump angle	J		degree (°)	47
Rollback angle (carry position)	K			50
Cycle time	Lift (with load)		sec	5.5
	Dump (with load)			1.8
	Lower (empty)			3.7
Maximum travel speed			km/hr (mph)	40 (24.9)
Braking distance			m (ft-in)	12.6 (41' 4")
Minimum turning radius (center of outside tire)				5.19 (17' 0")
Gradeability			degree (°)	30
Breakout force			kg (lb)	12370 (27270)
Travel speed	Forward	First gear	km/hr (mph)	6.7 (4.2)
		Second gear		12.1 (7.5)
		Third gear		23.5 (14.6)
		Fourth gear		38.8 (24.1)
	Reverse	First gear		7.0 (4.3)
		Second gear		12.8 (8.0)
		Third gear		24.7 (15.3)

3. WEIGHT

Item		kg	lb
Front frame assembly		935	2065
Rear frame assembly		1342	2960
Front fender (LH & RH)		61	135
Rear fender (LH & RH)		95	210
Counterweight	HL940 T3	300	665
	HL940XT T3	500	1105
Cab assembly		726	1605
Engine assembly		555	1225
Transmission assembly		404	895
Driveshaft (front)		12	30
Driveshaft (center)		18	40
Driveshaft (rear)		10	25
Front axle (include differential)		750	1655
Rear axle (include differential)		772	1705
Tire (20.5 R25 L3 ★★)		696	1535
Hydraulic tank assembly		150	335
Fuel tank assembly		280	620
Main pump assembly		23	55
Fan & brake pump assembly		23	55
Main control valve (2/3 spool)		42/55	95/125
Steering valve (Priority valve)		8	20
Boom assembly	HL940 t3	720	1590
	HL940XT t3	945	2085
Bell crank assembly		260	575
Bucket link		35	80
2.3 m³ bucket, with bolt on cutting edge		1110	2450
2.1 m³ bucket, with bolt on cutting edge		1070	2360
Quick coupler		1040	2295
Boom cylinder assembly		85	190
Bucket cylinder assembly (HL940 T3/HL940XT T3)		95/115	210/255
Steering cylinder assembly		17	37
Seat (Including suspension and armrest)		78	175
Under guard Kit		46	105
Engine Hood assembly		293	650
Mud guard assembly (LH / RH)		41	95
Battery (1EA)		30	70

4. SPECIFICATION FOR MAJOR COMPONENTS

1) ENGINE

Item	Specification
Model	HYUNDAI HE6.7
Type	4-cycle turbocharged, charge air cooled diesel engine
Control type	Electronic control
Cooling method	Water cooling
Number of cylinders and arrangement	6 cylinders, in-line
Firing order	1-5-3-6-2-4
Combustion chamber type	Direct injection type
Cylinder bore × stroke	107 × 124 mm (4.2" × 4.9")
Piston displacement	6700 cc (408 cu in)
Compression ratio	17.2 : 1
Gross power	145 hp (108 kW) at 2100 rpm
Net power	142 hp (106 kW) at 2100 rpm
Maximum power	146 hp (109 kW) at 1900 rpm
Peak gross torque	667 N · m (492 lbf · ft) at 1400 rpm
Engine oil quantity	18 ℓ (4.8 U.S. gal)
Wet weight	552 kg (1216 lb)
Starting motor	24V-4.8kW
Alternator	24V-70Amp
Battery	2 × 12V × 120Ah

2) MAIN PUMP

Item		Specification
Type		Variable piston pump
Capacity		74 cc/rev
Maximum operating pressure		280 kgf/cm ² (3980 psi)
Rated output flow		160 ℓ /min (42.3 U.S.gpm)

3) FAN AND BRAKE PUMP

Item		Specification	
		Fan	Brake
Type		Variable piston pump	
Capacity		28 cc/rev	
Maximum operating pressure		250 bar	150 bar
Rated output flow		56 ℓ /min (14.8 U.S.gpm)	

4) MAIN CONTROL VALVE

Item		Specification
Type		2 spool & 3 spool
Operating method		Hydraulic pilot assist
Main relief valve set pressure		280 kgf/cm ² (3980 psi)
Overload relief valve set pressure		340 kgf/cm ² (4840 psi)

5) REMOTE CONTROL VALVE

Item		Specification
Type		Joystick (or with aux lever)
Control pressure	Minimum	3.7 kgf/cm ² (52.6 psi)
	Maximum	30 kgf/cm ² (427 psi)

6) CYLINDER

Item		Specification
Boom cylinder	Bore dia × Rod dia × Stroke	Ø 110 × Ø 65 × 738 mm
Bucket cylinder (HL940 T3)	Bore dia × Rod dia × Stroke	Ø 125 × Ø 70 × 560 mm
Bucket cylinder (HL940XT T3)	Bore dia × Rod dia × Stroke	Ø 125 × Ø 75 × 580 mm
Steering cylinder	Bore dia × Rod dia × Stroke	Ø 65 × Ø 40 × 429 mm

7) DYNAMIC POWER TRANSMISSION DEVICES

Item		Specification
Torque converter	Model	ZF 4WG160
	Type	Single-stage, single-phase
	Ratio	2.302 : 1
Transmission	Type	Full-automatic power shift
	Gear shift	Forward fourth gear, reverse third gear
	Control	Electrical single lever type, kick-down system
Axle	Drive devices	4-wheel drive
	Front	Front fixed location
	Rear	Oscillation $\pm 12^\circ$ of center pin-loaded
Wheels	Tires	20.5 R25 L3 ★★
Brakes	Travel	Four-wheel, wet-disc type, full hydraulic
	Parking	Spring applied, hydraulic released brake on transmission
Steering	Type	Full hydraulic, articulated
	Steering angle	40° to both right and left angle, respectively